

**2018-2019**  
**District 92 Band Handbook**



***OAK PRAIRIE***  
***JUNIOR HIGH SCHOOL BAND***

<http://band.d92.org>



Scan QR Codes with a Smart Phone  
Or Click Link description below QR Codes

[Band Homepage](http://band.d92.org)

**Board of Education**

Michael Messina, President

Tim Houlihan, Secretary

Tom Adamczyk

James Gorecki

Doreen Sweis

TBA

TBA

**Administration**

Mark T. Fleming, Interim Superintendent

Kim K. West, Asst. Superintendent for Special Education

Teresa A. Bishop, Asst. Superintendent for Business Services

**District Office**

708 N. State Street

Lockport, IL 60441

(815) 838-8031

**Ludwig School**

710 N. State Street

Lockport, IL 60441

(815) 838-8020

Lisa Lyke, Principal

**Oak Prairie Junior High School**

15161 S. Gougar Road

Lockport, IL 60491

(815) 836-2724

Mark Murray, Principal

Scott Nyssen, Assistant Principal

## Table of Contents

Philosophy of District 92 Bands	4
Why Music?	4
<b>Program Structure</b>	
Structure of Curricular Bands	5
Structure of Extra-Curricular Bands	6-7
<b>Equipment</b>	
Facilities	7
Recommended Instruments	8
School Owned Instruments	8
Care of Instruments	9
Instrument Repair	9
Music Uniforms	9
Band Music	9
Supply List	10
<b>Academic Policies</b>	
Grading	11
Performance Policies	11
Performance Calendar	12-13
Google Classroom	14
Home Practice	14
Private Lessons	14
Discipline	16
<b>Tips for Success</b>	16

## Philosophy of District 92 Bands

Band at Oak Prairie Junior High School is regarded as an academic subject for all who participate. Although Band is an elective class, Band members must adhere to all the requirements set forth in the District 92 Student Handbook.

Beginning Band at Ludwig School is regarded as a co-curricular activity. Because Band is a cumulative subject, Beginning Band members must adhere to the attendance, practice and assignment policies outlined in this handbook.

Band classes are designed to provide students with Comprehensive Musicianship through Performance and study of the elements of music. There are many reasons to participate in the District 92 Bands; however, making music together is the primary purpose of the District Band program.

### Why Music?

**I. Music is a Science.** It is exact, specific, and it demands exact acoustics. A conductor's full score is a chart, a graph that indicates frequencies, intensities, volume changes, melody, and harmony all at once and with the most exact control of time.



**II. Music is Mathematical.** It is rhythmically based on the subdivisions of time into fractions, which must be done instantaneously, not worked out on paper.

[Why Music Matters](#)

**III. Music is a Foreign Language.** Most of the terms are in Italian, German, or French; and the notation is certainly not English - but a highly developed kind of shorthand that used symbols to represent ideas. The semantics of music is the most complete and universal language.

**IV. Music is History.** Music usually reflects the environment and times of its creation, often even the country and/or racial feeling.

**V. Music is Physical Education.** It requires fantastic coordination of fingers, hands, arms, lip, cheek, and facial muscles in addition to extraordinary control of the diaphragmatic, back, stomach, and chest muscles, which respond instantly to the sound the ear, hears and the mind interprets.

**VI. Music Develops Insight and Demands Research.**

**VII. Music is all these things, but most of all, Music is Art.**

It allows a human being to take all these, dry technically boring, (but difficult) techniques and use them to create emotion. That is one thing science cannot duplicate; humanism, feeling, emotion, call it what you will.

## Curricular Band Classes

### Ludwig 5th Grade Band



The Ludwig Band gives students the opportunity to learn a musical instrument and is open to any 5<sup>th</sup> grade student. The focus of Beginning Band is on developing good fundamentals of playing on their instrument. Students will have one 25 minute pull out group lesson per week based on a rotating schedule, so that a student will not miss the same class more than once every four weeks. This has proven to be a very effective at delivering and differentiating instruction in small groups.

### Oak Prairie 6th Grade Band

The Oak Prairie 6th Band Curriculum is designed for students who have had at least one year of playing experience. The 6th Grade Band develops skills appropriate, including learning and knowledge of major and minor scales, terminology, and performance skills. 6th Grade Band is open to any 6<sup>th</sup> grade student without audition who has completed beginning band. Director consent is required for students enrolling without Beginning Band experience.

### Oak Prairie 7th Grade Band

The Oak Prairie 7th Grade Band is designed for students in their 3<sup>rd</sup> year of playing a musical instrument. The curriculum for the Concert Band is geared towards the advancing junior high school musician in developing ensemble skills. The 7th Grade Band is open to any 7th grade student who has completed 6th Grade Band.

### Oak Prairie 8th Grade Band

The Oak Prairie 8th Grade Band consists of the most advanced musicians in their 4<sup>th</sup> years of playing. The curriculum for the 8th Grade Band focuses on advanced performance skills and comprehensive musicianship.

Due to instrumentation and musicianship needs, the 7th & 8th Grade Bands may combine for some (or parts of some) performances.



## **Extra-Curricular Band Activities**

### **Jazz Band (Late September - April)**

The Oak Prairie Jazz Band is designed for students already in the music department who wish to broaden their musical experiences in the style of a traditional big band. Membership in the Jazz Band is by audition in the late-Spring of the preceding year. Materials for the audition are available in the early spring and will be made available to all students in 5th through 7th grades. The Oak Prairie Jazz Band meets Monday, and Wednesday 2:45 to 4 p.m.

### **Jazz Combo (August-Late September)**

Jazz Combo is for very advanced students in the Oak Prairie Jazz Band. Jazz Combo will meet Monday and Wednesday from 2:45-4pm beginning at the start of the school year through late September. The purpose of Jazz Combo is to prepare students for ILMEA auditions and to be featured soloists with the Jazz Band. Jazz Combo is selected from the audition process for Jazz Band.

### **Jazz Lab (April - May)**

Jazz Lab is an introductory course for any students in 6th-8th Grades that are interested in learning basic jazz style and improvisation techniques. This non-performance ensemble is open to any instruments. Jazz Lab will help students prepare for the Oak Prairie Jazz Band and ILMEA Jazz auditions.

### **Brass Band (September - April)**

The Brass Band is an extracurricular group designed for all Brass Students. The Brass Band will focus on playing as an ensemble and developing characteristics of a brass instruments. It is open to all brass students of any experience and rehearses on Tuesdays from 2:45-3:30pm. On occasion there will be special guest instructors to focus on individual instruments.

### **Woodwind Ensemble (September - April)**

The Woodwind Ensemble is an extracurricular group geared towards those woodwind students that would not be eligible for a jazz ensemble. The group focuses strictly on ensemble music and rehearses Tuesdays from 2:45-3:30pm. On occasion, there will be special guest instructors at woodwind ensemble for individual instruments.

### **Percussion Ensemble (September - March)**

The Percussion Ensemble is geared towards all 6th-8th grade percussionists. The focus of the percussion ensemble will be to develop greater understanding of percussion technique in a smaller ensemble setting. Students will learn all of the battery instruments, timpani, mallets, and perform on non-traditional instruments such as Bucket Drums.

<http://band.d92.org>

### **ILMEA Concert Band and ILMEA Jazz Band (September - November)**

The Illinois Music Educators Association is the state affiliate of the National Association for Music Education. Aside from advocating on the state and national level, ILMEA sponsors district and state level contests designed to bring the best students from across the state together. **To audition for ILMEA Concert Band or the ILMEA Jazz Band students should have received the ILMEA music packet in May.**

### **IGSMA Solo and Ensemble Contest (November - February)**

Band students are given the opportunity to perform solos and/or ensembles for the District 92 Solo and Ensemble Festival and the Illinois Grade School Music Association (IGSMA) contest in February.

### **Facilities & Instruments**



Oak Prairie and Ludwig Schools are very proud of the facilities that it offers to its students. It is everyone's responsibility to treat the facilities with the respect they deserve. The Oak Prairie Band Room has very new equipment and is in excellent condition. It is important that each student play his/her part in keeping things orderly and functional. Items such as music, folders, instruments and personal belongings should be kept in their proper locations.

Students: Think and act responsibly whenever using the band room. No one has permission to touch sound equipment in the band room, except for the instructor. The equipment is very delicate and extremely costly to repair.

It is important that all students have identification on their instrument cases. If misplaced, lost or in for repair, the identification tag will make it much easier to identify. This will also eliminate problems of loss or mix-ups.

Band members may keep their instruments in the band room instrument storage areas during the school day. There are designated spaces for each family of instruments at Ludwig. Oak Prairie students each have their own band lockers. Only instruments and music should be kept in the band lockers.

Treat personal equipment with care.

Folders should not be kept inside instrument cases.

No gum, candy, food or drinks are allowed in the Band Room or practice rooms.

Be aware that many students have access to the band room during the day.

- Never leave your instrument lying around the room unattended!
- Never leave money, purses, wallets or other valuables in the Band Room, even during performances. This includes valuable clothing items.

<http://band.d92.org>

## Recommended Instruments

It is very important to consider many factors when renting an instrument. Perhaps the most important is the service and support provided during the rental period so that your child has an instrument that works well and will be successful. Please only purchase a musical instrument from a musical instrument dealer. [Quinlan and Fabish](#) is a local musical instrument dealer that provides exceptional service and delivers materials to District 92 schools once a week. Their phone number is (800) 63-SOUSA or online at [www.qandf.com](http://www.qandf.com)

### These are the District 92 Required Instruments:

**Flute:** Gemeinhardt, Yamaha, Selmer, Trevor James

**Oboe:** Yamaha, Selmer, Buffet

**Clarinet:** Yamaha, Selmer, LeBlanc, Buffet, Vito, Backun

Clarinet Mouthpiece: Vandoren 5RV Lyre mouthpiece

Clarinet Ligature: Rovner

**Saxophone:** Yamaha, Selmer, Keilwerth, Buffet-Crampton, Eastman

Saxophone Mouthpiece: Vandoren AL3

Saxophone Ligature: Rovner

**Trumpet, Trombone, Tuba:** Yamaha, Bach (Selmer), Getzen, Eastman, Jupiter

**F Horn:** Yamaha, Holton, Conn, Eastman

**Baritone/Euphonium:** Yamaha, Jupiter, Besson, Selmer (full size preferred)

**Percussion:** Xylophone Kit with Drum Pad: Yamaha, Pearl or Musser

See Supply List (page 10) for Specific Sticks and Mallets

## School Owned Instrument



Instruments that are not of a practical nature to own are provided by the school for student use. The student is responsible for the care, maintenance and security of a school owned instrument. Any student issued a school owned instrument will be required, along with his/her parent or guardian, to sign a **School Owned Instrument Contract**.

**There is a \$90/ school year maintenance fee for use of a school instrument.** If a school owned instrument is damaged beyond the \$90

fee, destroyed or lost due to abuse or neglect, it is the responsibility of the person who has checked out that school owned instrument. If the instrument is returned with missing, damaged or excessively dirty parts, the student will be responsible for the repair, replacement or repair bills that ensue to return the instrument to its originally loaned condition (beyond \$90). This fee can be paid \$10/month for 9 months. If the fee is paid all at once at the beginning of the year, the fee is reduced to \$80.

For students using instruments over the summer the fee will be \$30.

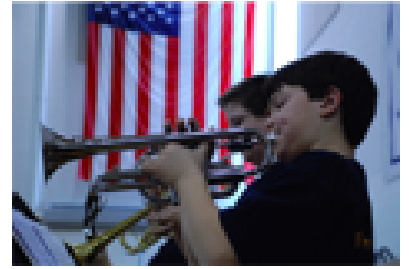


## Care of Instruments

It is the responsibility of each student to keep his or her equipment in well maintained and working order. All students will be informed of how to maintain and clean their instruments properly.



Accessories such as reeds, valve oil, slide cream, slide grease are available from any music store or company. Be sure to keep a good supply on hand. Feel free to order these directly from [Quinlan and Fabish](#) for delivery to Oak Prairie and Ludwig Schools.



### [Videos on Instrument Care](#)

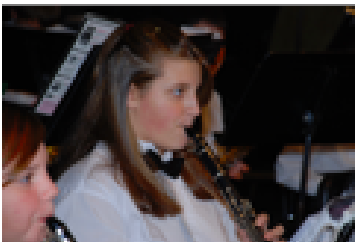
## Instrument Repair

Instrument repair is a highly specialized skill. It is very easy to damage an instrument in an attempt to repair it if you are not a trained professional. Please share any instrument problems with your director so we can assess the problem and make recommendations as to what sort of repair is necessary. This will help protect you and your instrument from costly repairs.

## Music Uniforms

Ludwig Beginning Band students will have the following uniform:

- Black pants – no jeans, shorts, or skirts
- Black dress shoes and socks – no gym shoes, no low cut socks please
- White shirt/blouse – polo or button down shirts are fine



Oak Prairie Band students will have this uniform:

- Black Oak Prairie Music Polo with shirt tucked in
- Black pants – no jeans, shorts, or skirts
- Black dress shoes and socks – no gym shoes

## Band Music

District 92 has an amazing library of band music. This can be attributed to the long history of bands in District 92 and respect for written music. These pieces are sometimes very old and are very difficult (not to mention costly) to replace.

- Sheet music is the textbook of the band class and should be treated with respect at all times.
- Always use **PENCIL** when making notes on your music and completely erase any pencil marks that you make in your music.



## Supply List

### All students **MUST** have:

- Music Stand for at home practice
- Metronome/Tuner or equivalent Smartphone Apps
- Band Method Books:
  - Ludwig Beginning Band – Tradition of Excellence Band Method Book 1
  - Oak Prairie 6th Grade Band – Essential Elements 2000 Method Book 1
  - Oak Prairie 7th & 8th Grade Bands - Tradition of Excellence Technique & Musicianship

### Woodwinds (Flute, Oboe, Clarinet, Saxophone)

- At least three good reeds at all times. **VanDoren, Legere** and **Emerald** are acceptable reeds. *Please only buy these brands.*
- **Strength of 2.5 (6<sup>th</sup> Grade) or 3 (7<sup>th</sup> & 8<sup>th</sup> Grade) are acceptable.**
- Reed guard
- Cork grease
- Cleaning swab

### Brass (Trumpet, French Horn, Trombone, Baritone, Tuba)

- Valve oil (spray bottle for trombones)
- Slide grease
- Mouthpiece brush
- “Snake” internal slide cleaner made for brass instruments
- 7th and 8th Grade Mouthpiece Upgrade
  - Trumpet 3C
  - French Horn Holton Farkas MC
  - Trombone/Baritone 6 1/2 AL
  - Tuba Conn Helleberg 7B
- Mutes will be made available through school if required. Please do not purchase mutes on your own unless instructed by a private instructor.

### Percussion

- Drum sticks – **Vic Firth American Custom SD1**
- Xylophone/bell mallets – Musser Two Step Med. Hard Rubber mallets
- Yarn mallets – Medium (any color)
- Stick bag – Please label all equipment and bags

## Grading

### Ludwig Beginning Band

Ludwig Beginning Band students will not receive a band grade on their report card.

### Oak Prairie Bands

A grade is given each quarter at Oak Prairie because band is a part of the school curriculum. A major portion of the band grade is based on performance tests given at home (using recording software) or during class. The grading process also considers rehearsal preparation, attendance, concerts, written assignments, home practice and daily effort.

**25% - Standards-Based Grading** - Skills that are demonstrated during class or through authentic performance assessments (Google Classroom & In-Class Assessments)

**50% - Daily Professionalism & Informal Daily Assessments** – Includes having all class materials, music, instrument, practicing your parts at home, and being an active participant

**25% - Performance Attendance** – Absences excused as stated below

## Performances

All District 92 Band members perform throughout the year. These events are the culmination of daily rehearsals and give students the opportunity to share what they've learned. **Absences will only be excused if written notification is given by a Parent/Guardian to the Director at least 10 Business Days prior to the performance.** Family emergencies will be excused (illness, death in family, etc).

Any student who misses a performance will have the opportunity to complete a make-up assignment. Please mark your calendars carefully at the beginning of the year to avoid any conflicts with performances. Additional dates may be added, especially for extra-curricular ensembles. We will inform you of any changes as soon as possible. Thank you in advance for understanding.

## Performance Dates

Additional dates may be added - [Please check the Band Website for the Most Up To Date Information](#)

August 24 - Beginning Band Demonstration @ Ludwig School 1pm - 7th & 8th Grade Bands

September 5 - ILMEA Registration Deadline

September 29 - ILMEA Auditions @ Summit Hill JHS, Frankfort - Select Students

TBA - Fall Jazz Concert @ Oak Prairie Cafe  
Jazz Band, Jazz Combo, Guest Artists

November 3 - ILMEA All District Band/Orchestra/Choir Festival @ Lincoln-Way Central HS  
Select Students by Audition

November 8 - Fall Band Concert @ Oak Prairie (7pm Performance, 6pm Student Arrival Time)  
6th Grade Band, 7th & 8th Grade Band

November 11 - ILMEA All District Jazz Festival @ Hinsdale Central HS  
Select Students by Audition

November 15 - Solo and Ensemble Entry Forms Due

December 12 - Jazz Band with Brass Tracks Jazz Orchestra @ Hackneys in Palos Park (7:30pm)

December 21 - Oak Prairie Bands @ Walsh School

January 10 - LTHS Step-Up Day 9-12pm  
8th Grade Students

January 15 - Lockport Bands 8th Grade Information Night  
Required for 8th Graders attending Lockport

January 17 - Beginning Band Debut Concert @ Ludwig 6:30pm  
Beginning Band & Jazz Band

January 28 - Winter Band Social @ Strike n' Spare (tentative)

February 5 - District 92 Solo and Ensemble Festival @ Oak Prairie 4 - 8pm - Select Students

February 9 - IGSMAS Solo and Ensemble Contest @ TBA - Select Students (AM)

February 9 - Jazz Band - Lincoln Way Jazz Festival @ Lincoln-Way Central (PM)

<http://band.d92.org>

February 14 - Prairie State Jazz Festival @ Prairie State College (All Day) - Jazz Band

February 21 - Lockport Middle School Band Festival @ LTHS East (7pm) - Symphonic Band

March 1 - Lockport Jazz Festival @ LTHS East Cafeteria (7pm) - Jazz Band

March 13 - Choir & Band IGSMA Performance (7pm) -  
8th Grade Choir, 7th & 8th Grade Band, Jazz Band

March 15 - Choir & Band Elementary Tour (TBA)

March 15 or 16 - IGSMA District Contest @ TBA (Time TBA) - 7th & 8th Grade Band

March 16 - Naperville Big Band Festival @ Neuqua Valley High School (Time TBA)

TBA - Spring Jazz Concert @ Oak Prairie Cafe  
Jazz Band, Guest Artists

April 13 - Band Festival @ Wentz Concert Hall, Naperville (Time TBA) - 7th & 8th Grade Band

May 7 - Spring Band Concert @ Oak Prairie (7pm Performance, 6pm Student Arrival Time)  
Ludwig Band, 6th Grade Band, 7th & 8th Grade Band

May 20 - Haunted Trails (tentative)

May 22 - Jazz Band Auditions Due

May 30 - Graduation @ Lockport East Fieldhouse (7:30pm, 6:45 Student Arrival Time)  
6th Grade & 7th Grade Band Members

<http://band.d92.org>

## Google Classroom

Students will use **Google Classroom** accounts to assess their progress in band classes. To do this you will need the following:

### Mobile Option

- iPad, Tablet, or SmartPhone with access to a Video Camera
- **Tempo Lite** metronome (Android and Apple)
- **Google Classroom, Docs & Sheets** apps (Android and Apple)

### Computer-Based Option

A computer with camera and microphone may also be used with the following website:

- [www.metronome.com](http://www.metronome.com)
- [classroom.google.com](http://classroom.google.com)

Oak Prairie has two Electronic Music Studios equipped with GarageBand, NoteFlight, Google Classroom, Microphones, Pianos, MIDI Controllers, Drum Pads, and other music software applications. If other students are waiting, there is a 10-minute time limit on using the Electronic Music Studios.

The Electronic Music Studios are open everyday from 7am-4pm. Passes are available for each of the lunch periods. Passes are available on a first come, first serve basis before school. Check before homeroom to see about getting a pass!



<http://band.d92.org>

## Home Practice

Home practice helps make it possible to play a musical instrument to the best of one's ability. All band members must practice regularly at home to insure progress. The benefits of home practice include building self-confidence and pride in one's performance. The recommended practice goal is 30 minutes a day, five days per week. However, **Quality of practice time is more important than quantity of practice time.** Although this is not part of the assignment completion grade, it does factor into class participation.



[Tips for Practicing](#)

**Parents – please monitor your child's practice.** Remember, only YOU can enforce it! Musicians cannot improve without a proper practice routine. We want your child to be the best possible musician they can be!

You may ask yourself, *“What can I do to help?”*

1. Show an interest in your child's musical progress, being careful not to make fun of the strange sounds you may hear from time to time.
2. Be interested in your child's growth and listen to your child. Parents don't have to have a musical background to recognize improvement.
3. Set a daily and weekly practice schedule in an environment that will be quiet and free of distractions.
4. Have your child perform on occasion for you or their family. They will become much more comfortable performing for others!
5. Show your support at performances and by chaperoning events and trips.

## Applied Lessons

It is impossible to overemphasize the positive impact of applied lessons. Individual instruction is the best way to help students fulfill their potential. The main benefit of an applied lesson is weekly one-on-one instruction with a specialist on the same instrument. An instructor will immediately reinforce strengths and give specific suggestions for improvement. [Lockport Township High School](#) provides many applied instructors during the afternoon and evening hours. Please consult this list for up to date lists of applied instructors.



[Lockport Applied Staff](#)

<http://band.d92.org>

## Discipline

Needless to say, no large organization can function without well-disciplined participants. It is not required that any student take band. Therefore, it is assumed by the directors that all students are willing participants. It is the student's responsibility to adhere to all rules set forth by the directors as well as those set forth by the school district.

Proper behavior at all performances is extremely important and expected. The actions of one member reflect upon all members of our organization, school and community. **Inappropriate behavior while traveling to, from or at any performance will be cause for dismissal from the program and possible school discipline.**

## Tips for Success in Band

1. Keep up with assignments!
  - Complete written assignments and turn them in on time!
  - Keep track of your scores in PowerSchool!
  - Use the tools on the Band Website & Google Classroom – recordings, assignments and documents are posted there!
2. Practice everyday - You can achieve anything if you set your mind to it!
3. Take applied lessons - You'll be amazed at the improvement and increased enjoyment!
4. Keep track of the calendar
  - Students need to be at performances. If a conflict is unavoidable, please follow our guidelines so we may excuse the absence. The website calendar is constantly updated. Click *Calendar* on the top of any band page.
5. Sign-up for the band email list at <http://band.d92.org> (by completing the Registration Form)
  - It's a great way to get announcements and reminders.
6. Stay organized!
  - Use your band folder for band materials ONLY - Keep your assignment sheets, band music and handouts together.



[Tips for Success](#)

[OakPrairieBand](#)



[@WCSD92music](#)

